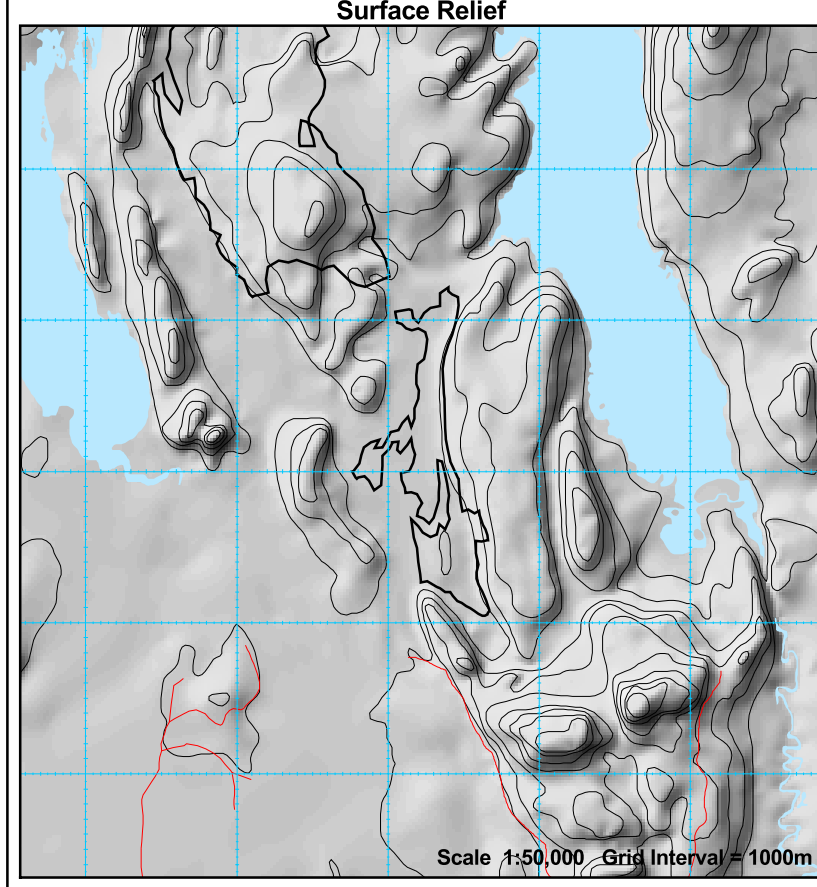


Scale 1:20,000

2009-2010 AWS, Block Charters 127

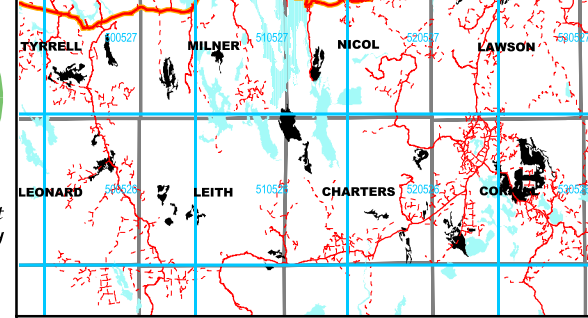


Produced March 11, 2009 by Virtual Earth Technologies
 UTM projection. Zone 17, NAD83. Timiskaming Forest Alliance Inc. does not guarantee the accuracy of the information on this map.
 True North: 0.1470 E.; Magnetic North: 11.1360 deg. W.; Annual Change: 0.0017 deg. W.
 All angles quoted are for 2003. All angles are in decimal degrees and referenced to Grid North.



Corporate Commitment to Forest Sustainability

Line Length = 8.43 km
 (Planned Residuals Included)



Stand	Area	Pw	Pj	Sb	Sw	All SPF	Po	Bw	All HWD	FOP Code
73379	31	0	0	2059	0	2059	0	0	0	SB1_01Ext
73964	25	0	0	564	0	1068	0	0	0	LC1_01Ext
TOTAL	56	0	0	2623	0	3127	0	0	0	

LEGEND

Fawcett 120 Block ID Label

Harvest Area

- 30 m
- 50 m
- 70 m
- 90 m

Area of Concern Symbology

Fisheries

- 30 m
- 50 m
- 70 m
- 90 m

Percent Slope

- 0% - 15%
- 15% - 30%
- 30% - 45%
- > 45%

- Cut to shoreline
- Pattern cut
- Pattern cut to half prescribed width

Moose Aquatic Feeding Area

Aesthetic Reserve

Late Winter Moose Habitat Reserve

Marten Core Habitat Area

Classified Value

Perennial Use Nest (Diameter & restrictions species dependent)

Modified Harvest Prescription (LWM, VM, TL, ST)

High Cultural Heritage Potential (Predictive Model)

Planned Residual Patch - "Floating"

Planned Residual Patch - "Fixed"

Recreational Trail

Research Plot

Area of Interest for VM zones

Area of Concern Labelling

- AEM = Modified Aesthetic Reserve
- AER = Aesthetic Reserve
- CD = Cold Water Fishery
- CL = Cool Water Fishery
- CV = Classified Value
- HA = Red Shouldered or Cooper's Hawk Nest Site
- HE = Heron Nesting Area
- RP = Research Plot
- PC = Block AOC Prescription (See FMP Sup. Doc. for details)
- LW = Late Winter Moose Enhancement
- LWM = Late Winter Moose Modified
- LWR = Late Winter Moose Reserve
- MA = Moose Aquatic Feeding Area
- NS = Northern Goshawk Nest Site
- OS = Osprey Nesting Site
- NG = Common Raptor / Owl Nest
- SN = Permitted Structure Reserve
- ST = Self Sustaining Lake Trout Lake
- TL = Viewscape Management Area
- VM = Viewscape Management Area

Block Access Planning

- Primary Road Corridor
- Secondary Road Corridor
- Zone of Acceptable Variation (Crossings)
- Tertiary Road Variable Width Access Zone
- Road Upgrade Access Corridor
- Road Restriction Boundary
- Timing Restriction Boundary
- Higher Risk Stream Crossing Zone
- Active Category 14 Aggregate Pit
- 51-1A Proposed Water Crossing - Culvert
- 51-1A Proposed Water Crossing - Bridge
- 51-1A Proposed Culvert with Removal
- 51-1A Proposed Bridge with Removal
- Access Restriction - consult FMP
- Conditional Road Use - consult FMP
- Proposed access in known value
- Road Maintenance

General Features

- Lake (Cool/Cold/Unsurveyed)
- Patent Land
- Provincial Park
- First Nation Reserve
- Conservation Reserve
- Non-productive Forest Land
- Gravel Pit
- Road
- Tertiary Road / Trail
- Interpolated Stream Network
- Stream / Intermittent Stream
- Township Boundary
- Transmission line
- Railway
- Building (symbolized)
- DAL = Designated Agricultural Land
- RK = Rock
- ▲ = Treed Muskeg
- ⊗ = Alder/Shrub Swamp
- ⊕ = Open Muskeg
- ⊖ = Grass & Meadow

B&S = Barren & Scattered
NSR = Not Sufficiently Regenerated
PFR = Production Forest Reserve
PF = Protection Forest (SC 4)
∅ = Inoperable or Bypass
UCL = Unclassified Land

NOTE: This map does not necessarily show all values in tertiary road zones. Contact TFAI for concerns.

NOTE: This map not to be photocopied in Black & White.