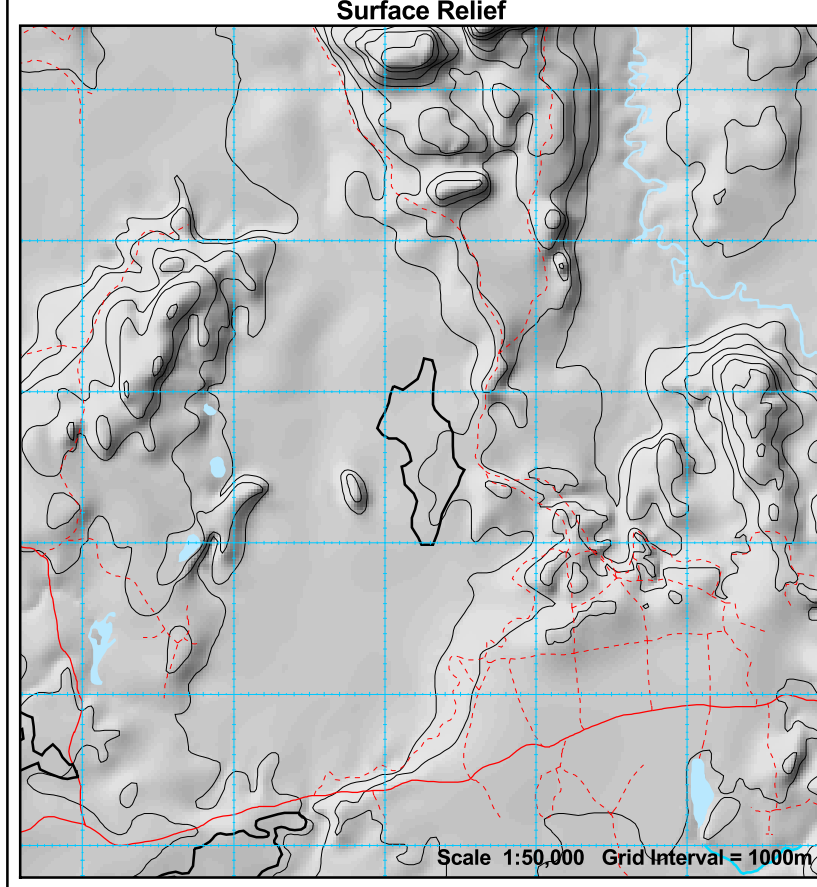


2008-2009 AWS, Block Charters 125

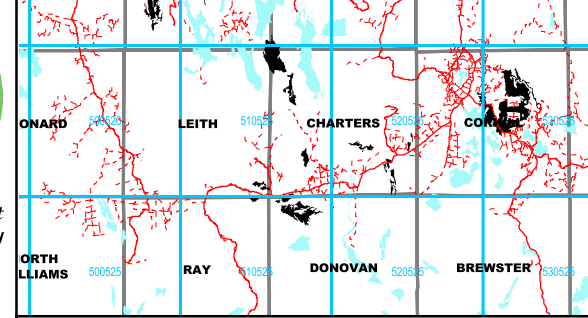


Produced March 4, 2008 by Virtual Earth Technologies
 UTM projection, Zone 17, NAD83. Timiskaming Forest Alliance Inc. does not guarantee the accuracy of the information on this map.
 True North: 0.1470 E.; Magnetic North: 11.1360 deg. W.; Annual Change: 0.0017 deg. W.
 All angles quoted are for 2003. All angles are in decimal degrees and referenced to Grid North.



Corporate Commitment to Forest Sustainability

Line Length = 3.50 km
 (Planned Residuals Included)



Stand	Area	Pw	Pj	Sb	Sw	All SPF	Po	Bw	All HWD	FOP Code
83124	32	0	0	858	864	1855	618	170	789	SF1_06Int1
TOTAL	32	0	0	858	864	1855	618	170	789	

LEGEND

Fawcett 120 Block ID Label

Area of Concern Symbology

Fisheries

- 30 m
- 50 m
- 70 m
- 90 m

Percent Slope

- 0% - 15%
- 15% - 30%
- 30% - 45%
- > 45%

Other Symbology

- Cut to shoreline
- Pattern cut
- Pattern cut to half prescribed width
- Moose Aquatic Feeding Area
- Aesthetic Reserve
- Late Winter Moose Habitat Reserve
- Marten Core Habitat Area
- Classified Value
- Perennial Use Nest (Diameter & restrictions species dependent)
- Modified Harvest Prescription (LWM, VM, TL, ST)
- High Cultural Heritage Potential (Predictive Model)
- Planned Residual Patch - "Floating"
- Planned Residual Patch - "Fixed"
- Recreational Trail
- Research Plot
- Area of Interest for VM zones

Area of Concern Labelling

(PC) = Block AOC Prescription (See FMP Sup. Doc. for details)

NOTE: Where reserve types are coincident, only one is shown. Consult the FMP for precedence order.

Block Access Planning

- Primary Road Corridor
- Secondary Road Corridor
- Zone of Acceptable Variation (Crossings)
- Tertiary Road Variable Width Access Zone
- Road Upgrade Access Corridor
- Road Restriction Boundary
- Timing Restriction Boundary
- Higher Risk Stream Crossing Zone
- Active Category 14 Aggregate Pit
- Proposed Water Crossing - Culvert
- Proposed Water Crossing - Bridge
- Proposed Culvert with Removal
- Proposed Bridge with Removal
- Access Restriction - consult FMP
- Conditional Road Use - consult FMP
- Proposed access in known value
- Road Maintenance

General Features

- Lake (Cool/Cold/Unsurveyed)
- Patent Land
- Provincial Park
- First Nation Reserve
- Conservation Reserve
- Non-productive Forest Land
- Gravel Pit
- B&S = Barren & Scattered
- NSR = Not Sufficiently Regenerated
- PFR = Production Forest Reserve
- PF = Protection Forest (SC 4)
- Ø = Inoperable or Bypass
- UCL = Unclassified Land
- Road
- Tertiary Road / Trail
- Interpolated Stream Network
- Stream / Intermittent Stream
- Township Boundary
- Transmission line
- Railway
- Building (symbolized)
- DAL = Designated Agricultural Land
- RK = Rock
- ↑ = Treed Muskeg
- ⊗ = Alder/Shrub Swamp
- ⊕ = Open Muskeg
- ⊖ = Grass & Meadow

NOTE: This map not to be photocopied in Black & White.