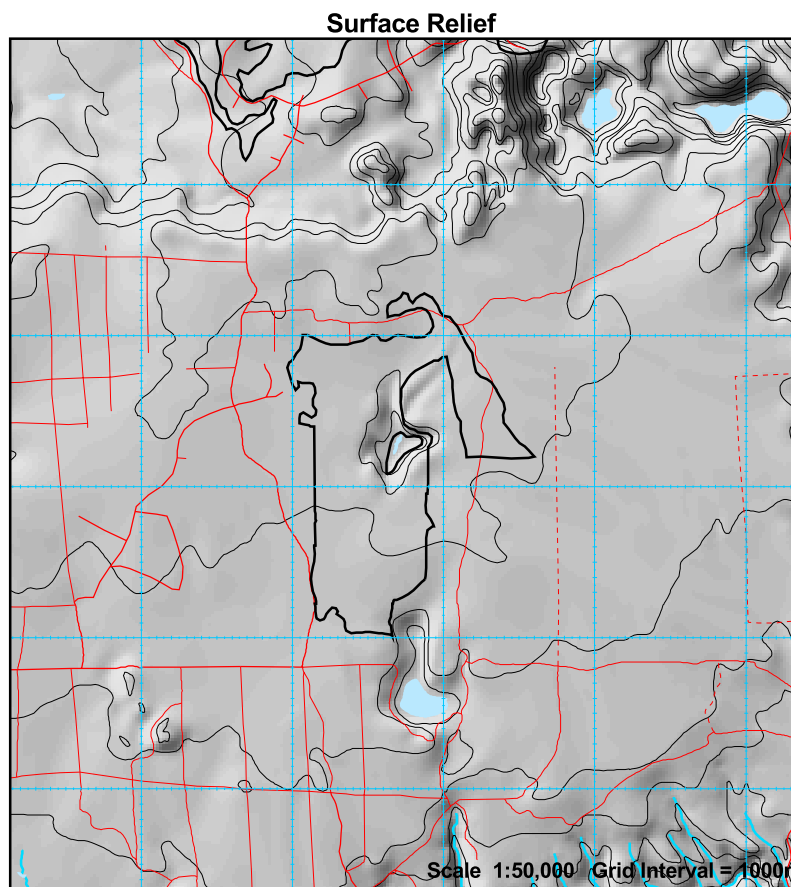
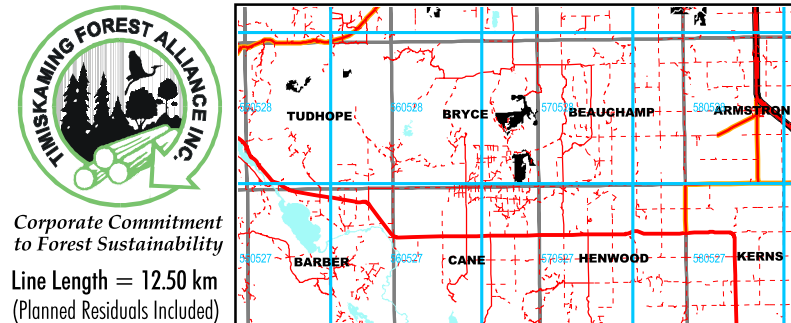


2009-2010 AWS, Block Bryce 121



Produced March 11, 2009 by Virtual Earth Technologies
 UTM projection. Zone 17, NAD83. Timiskaming Forest Alliance Inc. does not guarantee the accuracy of the information on this map.
 True North: 0.7390 E.; Magnetic North: 12.4970 deg. W.; Annual Change: 0.0067 deg. E.
 All angles quoted are for 2003. All angles are in decimal degrees and referenced to Grid North.



Stand Listing

Stand	Area	Pw	Pj	Sb	Sw	All SPF	Po	Bw	All HWD	FOP Code
22108	11	0	840	0	0	840	128	0	128	PJ1_06Int1
22918	13	0	3341	0	0	3341	516	0	516	PJ1_06Int1
25303	119	0	22749	0	0	22749	3907	2108	6015	PJ1_06Int1
25913	4	0	304	0	0	304	46	0	46	PJ1_06Int1
27804	4	0	235	0	31	265	46	25	71	PJ1_06Int1
28411	2	0	42	24	0	67	0	86	86	MWT_02Ext
TOTAL	153	0	27511	24	31	27566	4643	2219	6862	

LEGEND

Fawcett 120 Block ID Label

Area of Concern Symbolology

Fisheries

- 30 m
- 50 m
- 70 m
- 90 m

Percent Slope

- 0% - 15%
- 15% - 30%
- 30% - 45%
- > 45%

Area of Concern Labeling

- AEM = Modified Aesthetic Reserve
- AER = Aesthetic Reserve
- CD = Cold Water Fishery
- CL = Cool Water Fishery
- CV = Classified Value
- HA = Red Shouldered or Cooper's Hawk Nest Site
- HE = Heron Nesting Area
- RP = Research Plot
- LW = Late Winter Moose Enhancement
- LWM = Late Winter Moose Modified
- LWR = Late Winter Moose Reserve
- MA = Moose Aquatic Feeding Area
- NG = Northern Goshawk Nest Site
- OS = Osprey Nesting Site
- SN = Common Raptor / Owl Nest
- ST = Permitted Structure Reserve
- TL = Self Sustaining Lake Trout Lake
- VM = Viewscape Management Area

Block Access Planning

- Primary Road Corridor
- Secondary Road Corridor
- Zone of Acceptable Variation (Crossings)
- Tertiary Road Variable Width Access Zone
- Road Upgrade Access Corridor
- Road Restriction Boundary
- Timing Restriction Boundary
- Higher Risk Stream Crossing Zone
- Active Category 14 Aggregate Pit
- 51-1A Proposed Water Crossing - Culvert
- 51-1A Proposed Water Crossing - Bridge
- 51-1A Proposed Culvert with Removal
- 51-1A Proposed Bridge with Removal
- Access Restriction - consult FMP
- Conditional Road Use - consult FMP
- Proposed access in known value
- Road Maintenance

General Features

- Lake (Cool/Cold/Unsurveyed)
- Patent Land
- Provincial Park
- First Nation Reserve
- Conservation Reserve
- Non-productive Forest Land
- Gravel Pit
- B&S = Barren & Scattered
- NSR = Not Sufficiently Regenerated
- PFR = Production Forest Reserve
- PF = Protection Forest (SC 4)
- Ø = Inoperable or Bypass
- UCL = Unclassified Land
- Road
- Tertiary Road / Trail
- Interpolated Stream Network
- Stream / Intermittent Stream
- Township Boundary
- Transmission line
- Railway
- Building (symbolized)
- DAL = Designated Agricultural Land
- RK = Rock
- ▲ = Treed Muskeg
- ⊗ = Alder/Shrub Swamp
- ⊕ = Open Muskeg
- ⊖ = Grass & Meadow

NOTE: This map not to be photocopied in Black & White.